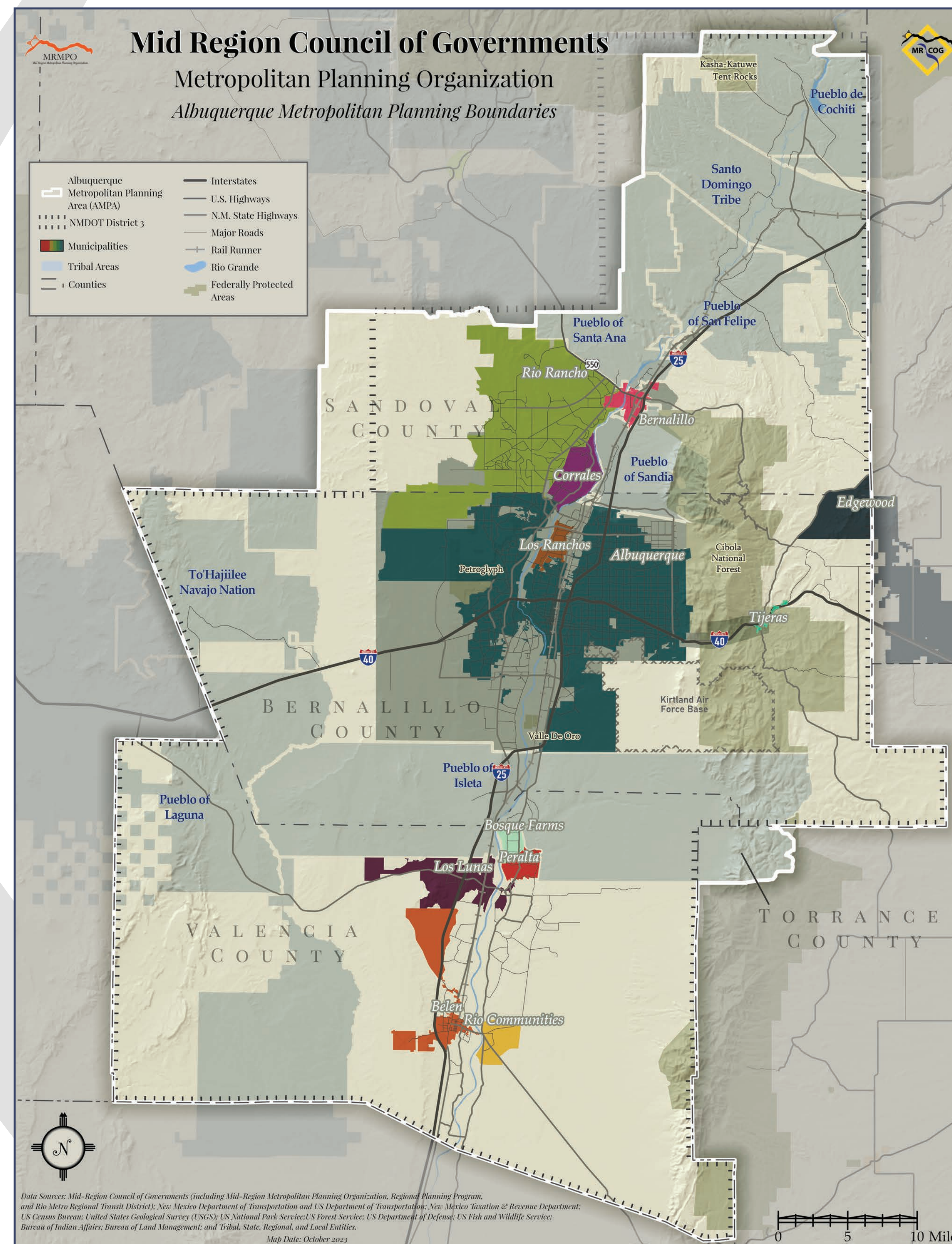


MRMPO and the MTP

MRMPO is the agency responsible for the long-range transportation planning process in the Albuquerque Metropolitan Planning Area (AMPA). A key part of that planning process is the development of the Metropolitan Transportation Plan (MTP) which identifies transportation needs in the region over the next 20+ years as well as strategies and projects for meeting those needs.

ALBUQUERQUE METROPOLITAN PLANNING AREA



The MTP is updated every five years. This MTP has a horizon year of 2045, and projected land use and transportation conditions for that year will be assessed. As the world underwent significant transformations during the pandemic—and we continue to witness transformative changes in transportation and other aspects of our society—the updated plan will be called the Transitions 2045 MTP.

← The development of the MTP is a collaborative process led by MRMPO along with significant input provided by partner agencies and the public. The boundary for the plan is the Albuquerque Metropolitan Planning Area.



The Mid-Region Metropolitan Planning Organization, or MRMPO, is a division of the Mid-Region Council of Governments (MRCOG) and is the designated MPO for the greater Albuquerque metro area (see the map to the right). MPOs are required by federal law for all urbanized areas with populations greater than 50,000. MRMPO is governed by the Metropolitan Transportation Board (MTB), a group of elected leaders who set the planning policy and vision for the future of transportation in the metropolitan area.

