

Corridor Notes

- 2nd St. is a north-south principal arterial that runs from Lomas Blvd to Alameda Blvd.
- The CMP corridor runs through the Village of Los Ranchos, and unincorporated Bernalillo County and provides access to Downtown Albuquerque.
- In general, congestion is minor and dispersed across the corridor.
- The highest daily **volumes** (20,000-25,000) along the corridor are from Griegos to Ranchitos Rd. There are particularly high morning volumes southbound along these segments.
- The slowest **speeds** along the segments are south of Paseo del Norte, while the highest speeds are found north of Osuna.
- **Crash rates** are 20% higher than the regional average. The intersections with the highest crash rates are Paseo del Norte and Mountain.
- Only limited **growth** in population (7%) and employment (10%) is projected in the corridor study area by 2035.

Transit Characteristics

- There is currently no transit service on 2nd St. ABQ Ride operates Route 10 on parallel 4th St. which is less than ¼ mile from 2nd St. in most places.

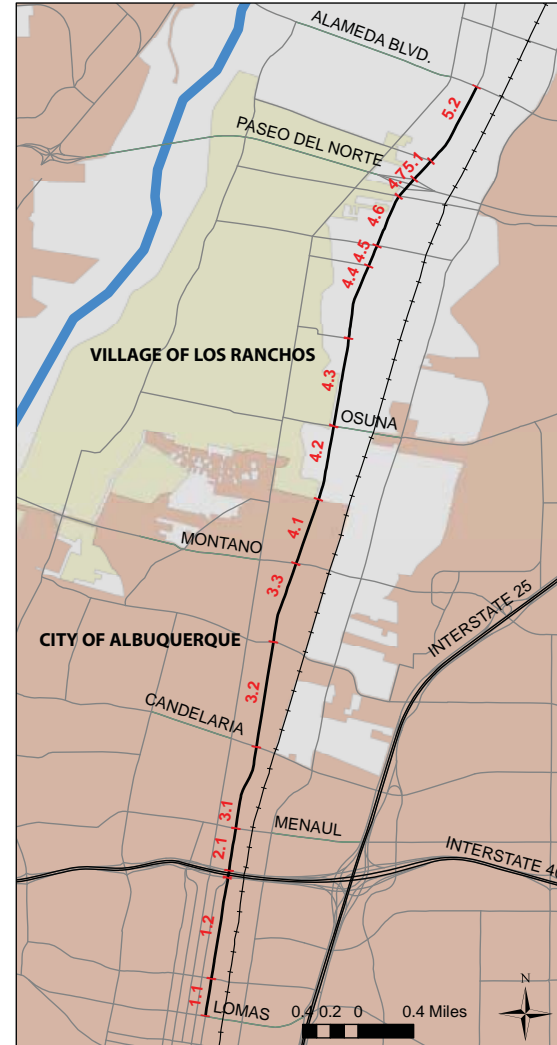
Profile & Statistics

Corridor Profile			
Study Area	3.7 Sq. Miles		
Length & No. of Segments	7.0 Miles - 17 segments		
Functional Class	Principal Arterial		
Access Control	None		
Lanes	Majority of corridor is 4 lanes 2 lanes from Lomas to I-40		
Intelligent Transportation Systems	Designated corridor: Yes ITS deployment: Yes - CCTV		
Transit	No existing service		
Bicycle Facilities	Route: Lomas to Montano		
Summary Data			
Daily Volume	5,000 - 25,000		
Average Speeds (PM North)	28 - 47 mph		
Average Speeds (PM South)	22 - 44 mph		
Total Delay (PM North)	133 seconds (17 sec./mile)		
Total Delay (PM South)	83 seconds (12 sec./mile)		
Demographic Trends			
Measure	2000	2008	2035
Population	8,901	9,272	9,936
Employment	10,290	10,050	11,099
Corridor Ranks			
Volume/Capacity Ratio	17 / 30		
Speed Differential	20 / 30		
Crash Rates	22 / 30		
Overall Rank	23 / 30		

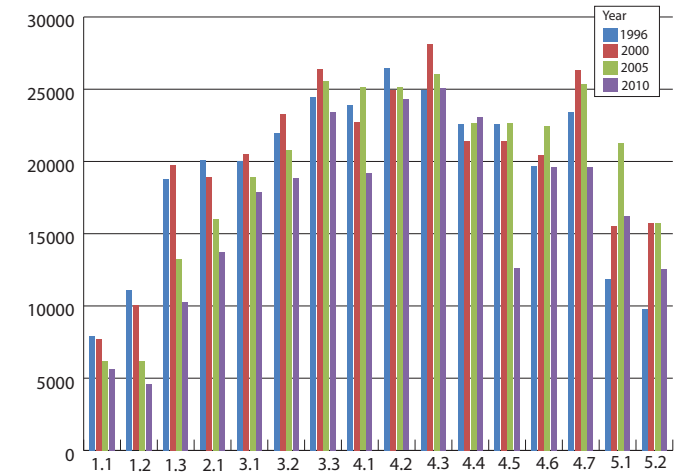
ID and Segment Names

ID	Location	Length (Miles)	Posted Speed (MPH)	2010 Volume (AWDT)
1.1	NORTH OF LOMAS - SOUTH OF MOUNTAIN	0.28	35	5,652
1.2	NORTH OF MOUNTAIN - S. OF I-40 E. FRONTAGE RD.	0.74	35	4,598
1.3	N. OF I-40 E. FRONTAGE RD. - S. OF I-40 W. FRONTAGE RD.	0.05	35	10,288
2.1	N. OF I-40 W. FRONTAGE RD. - SOUTH OF MENAUL	0.31	35	13,757
3.1	NORTH OF MENAUL - SOUTH OF CANDELARIA	0.61	35	17,857
3.2	NORTH OF CANDELARIA - SOUTH OF GRIEGOS	0.77	40	18,873
3.3	NORTH OF GRIEGOS - SOUTH OF MONTANO	0.59	40	23,414
4.1	NORTH OF MONTANO - NEAR EL CAMINITO	0.49	45	19,225
4.2	ALB. N.C.L. - SOUTH OF OSUNA	0.54	45	24,289
4.3	NORTH OF OSUNA - SOUTH OF PUEBLO SOLANO	0.64	45	25,079
4.4	NORTH OF PUEBLO SALANO - SOUTH OF LOS RANCHOS RD	0.55	45	23,088
4.5	NORTH OF LOS RANCHOS RD - SOUTH OF RANCHITOS RD	0.16	45	12,598
4.6	NORTH OF RANCHITOS RD - SOUTH OF EL PUEBLO	0.39	45	19,617
4.7	NORTH OF EL PUEBLO - SOUTH OF PASEO DEL NORTE EAST RAMPS	0.07	45	19,594
4.8	NORTH OF PDN EAST RAMPS - SOUTH OF PDN WEST RAMPS	0.10	45	17,923
5.1	NORTH OF PASEO DEL NORTE WEST RAMPS - SOUTH OF ORTEGA	0.18	45	16,252
5.2	NORTH OF ORTEGA - SOUTH OF ALAMEDA BLVD	0.63	45	12,586

ID Location



Average Weekday Daily Traffic



Access Characteristics

ID	North-Bound				South-Bound				Center-Turn Lanes
	Driveways	Intersections	Right-Turn Lanes	On Street Parking	Driveways	Intersections	Right-Turn Lanes	On Street Parking	
1.1	15	6	0	Yes	0	0	0	No	No
1.2	23	13	0	Yes	0	0	0	No	No
1.3	0	0	0	No	0	0	0	No	No
2.1	6	2	0	No	3	2	0	Yes	No
3.1	13	6	1	No	11	6	0	No	Med. Cut / Med. Turn Bay
3.2	27	4	0	No	0	5	1	No	Med. Cut / Med. Turn Bay
3.3	20	4	1	No	0	2	1	No	Med. Cut / Med. Turn Bay
4.1	9	3	0	No	0	0	1	No	No
4.2	20	6	0	No	0	4	0	No	No
4.3	17	5	0	No	3	5	1	No	Continuous
4.4	16	5	0	No	6	5	0	No	Continuous
4.5	2	1	0	No	0	0	0	No	Continuous
4.6	9	3	0	No	0	3	1	No	Continuous
4.7	1	0	0	No	0	0	0	No	No
4.8	0	1	0	No	0	1	1	No	No
5.1	7	1	0	No	0	2	0	No	Continuous
5.2	15	2	0	No	1	3	0	No	Continuous

Volume Notes

- The heaviest volumes along 2nd St occur between Albuquerque city limits and Ranchitos Rd (23,000-25,000 AWDT in 2010).
- Overall average volumes decreased by 7% between 2000 and 2008. During that same period, the population in the study area increased by 4%.
- Most segments experienced volume decreases between 2000 and 2010; the greatest decrease from 2000 to 2010 (54%) occurred between I-40 South Frontage Rd and Mountain Rd.

Access Notes

- The 2nd St CMP corridor has **no access control**.
- There are median turn bays between Menaul and Montgomery and continuous center turn lanes north of Osuna.
- There are 14 **signalized intersections** along the CMP corridor; an average of one signal **every 0.50 miles**.

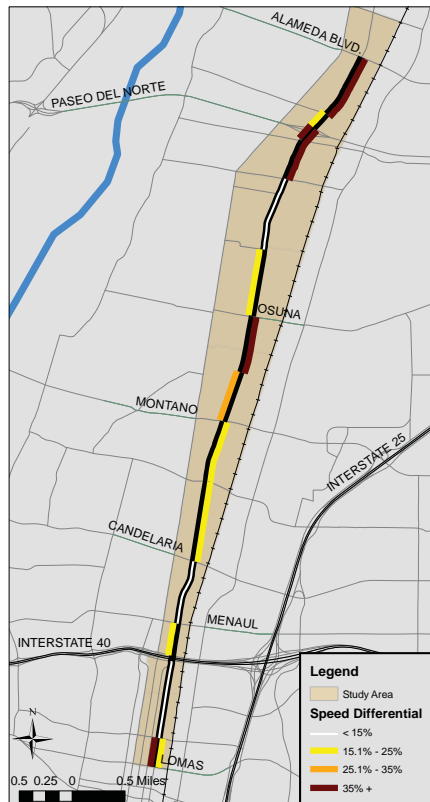
Speed Differential (Observed Speed vs. Posted Speed)

ID	Location	Posted Speed	Speed (MPH)				Speed Differential			
			AM-SB	AM-NB	PM-SB	PM-NB	AM-SB	AM-NB	PM-SB	PM-NB
1.1	NORTH OF LOMAS - SOUTH OF MOUNTAIN	35	21.1	28.4	23.5	38.4	39.8%	18.8%	32.9%	-9.7%
1.2	NORTH OF MOUNTAIN - S. OF I-40 S. FRONTAGE RD.	35	30.0	36.4	33.3	31.1	14.2%	-4.1%	4.9%	11.1%
1.3	N. OF I-40 S. FRONTAGE RD. - S. OF I-40 N. FRONTAGE RD.	35	34.3	40.4	33.5	30.3	2.0%	-15.4%	4.2%	13.3%
2.1	N. OF I-40 N. FRONTAGE RD. - SOUTH OF MENAUL	35	29.5	34.2	32.1	30.0	15.7%	2.2%	8.3%	14.3%
3.1	NORTH OF MENAUL - SOUTH OF CANDELARIA	35	34.1	34.9	33.7	34.4	2.6%	0.3%	3.8%	1.6%
3.2	NORTH OF CANDELARIA - SOUTH OF GRIEGOS	40	37.6	30.9	44.4	37.7	6.1%	22.9%	-11.0%	5.8%
3.3	NORTH OF GRIEGOS - SOUTH OF MONTANO	40	38.4	32.3	41.2	28.7	3.9%	19.2%	-3.0%	28.3%
4.1	NORTH OF MONTANO - ALB. N.C.L.	45	33.0	42.4	22.4	40.6	26.6%	5.7%	50.3%	9.8%
4.2	ALB. N.C.L. - SOUTH OF OSUNA	45	44.7	28.3	43.6	27.8	0.6%	37.2%	3.1%	38.1%
4.3	NORTH OF OSUNA - SOUTH OF PUEBLO SOLANO	45	35.1	43.0	43.5	44.3	22.0%	4.4%	3.4%	1.6%
4.4	NORTH OF PUEBLO SALANO - SOUTH OF RANCHITOS ROAD	45	46.3	45.2	41.4	40.7	-2.8%	-0.3%	7.9%	9.6%
4.5	NORTH OF LOS RANCHOS - SOUTH OF RANCHITOS	45	42.4	41.0	37.0	32.3	5.8%	8.9%	17.9%	28.3%
4.6	NORTH OF RANCHITOS ROAD - SOUTH OF EL PUEBLO	45	41.1	25.6	37.0	27.5	8.7%	43.1%	17.7%	38.8%
4.7	NORTH OF EL PUEBLO - SOUTH OF PASEO DEL NORTE RAMP	45	27.8	28.4	32.2	28.9	38.2%	36.8%	28.4%	35.8%
4.8	NORTH OF PDN EAST RAMP - SOUTH OF PDN WEST RAMP	45	29.6	34.4	27.0	36.2	34.2%	23.5%	40.0%	19.5%
5.1	NORTH OF PASEO DEL NORTE RAMP - SOUTH OF ORTEGA	45	37.9	46.1	37.0	47.2	15.8%	-2.4%	17.8%	-4.9%
5.2	NORTH OF ORTEGA - SOUTH OF ALAMEDA BLVD.	45	40.5	23.5	44.1	28.9	10.0%	47.8%	2.0%	35.9%

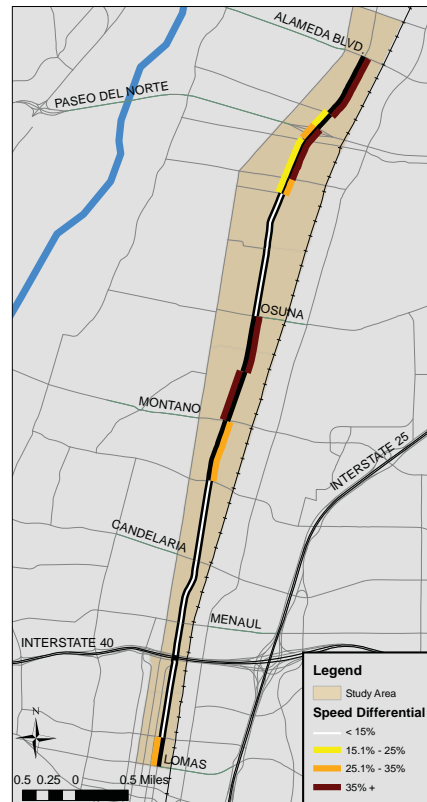
Volume/Capacity Ratio

ID	Location	Ratio			
		AM-SB	AM-NB	PM-SB	PM-NB
1.1	NORTH OF LOMAS - SOUTH OF MOUNTAIN	0.00	0.49	0.00	1.00
1.2	NORTH OF MOUNTAIN - S. OF I-40 S. FRONTAGE RD.	0.97	0.50	0.48	1.24
1.3	N. OF I-40 S. FRONTAGE RD. - S. OF I-40 N. FRONTAGE RD.	0.36	0.26	0.27	0.47
2.1	N. OF I-40 N. FRONTAGE RD. - SOUTH OF MENAUL	0.30	0.49	0.55	0.38
3.1	NORTH OF MENAUL - SOUTH OF CANDELARIA	0.71	0.46	0.48	0.79
3.2	NORTH OF CANDELARIA - SOUTH OF GRIEGOS	0.74	0.46	0.52	0.78
3.3	NORTH OF GRIEGOS - SOUTH OF MONTANO	0.95	0.53	0.61	0.86
4.1	NORTH OF MONTANO - ALB. N.C.L.	0.69	0.44	0.57	0.75
4.2	ALB. N.C.L. - SOUTH OF OSUNA	0.88	0.48	0.68	0.80
4.3	NORTH OF OSUNA - SOUTH OF PUEBLO SOLANO	1.06	0.51	0.80	0.85
4.4	NORTH OF PUEBLO SALANO - SOUTH OF RANCHITOS ROAD	1.00	0.64	0.60	1.21
4.5	NORTH OF LOS RANCHOS - SOUTH OF RANCHITOS	0.62	0.13	0.26	0.55
4.6	NORTH OF RANCHITOS ROAD - SOUTH OF EL PUEBLO	0.66	0.25	0.29	0.76
4.7	NORTH OF EL PUEBLO - SOUTH OF PASEO DEL NORTE RAMP	0.69	0.26	0.38	0.67
4.8	NORTH OF PDN EAST RAMP - SOUTH OF PDN WEST RAMP	0.62	0.41	0.50	0.85
5.1	NORTH OF PASEO DEL NORTE RAMP - SOUTH OF ORTEGA	0.39	0.50	0.53	0.87
5.2	NORTH OF ORTEGA - SOUTH OF ALAMEDA BLVD.	0.33	0.49	0.42	0.47

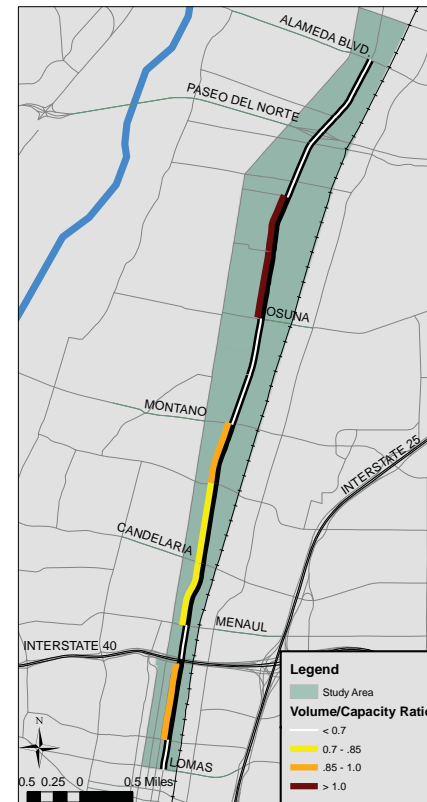
AM Speed Differential



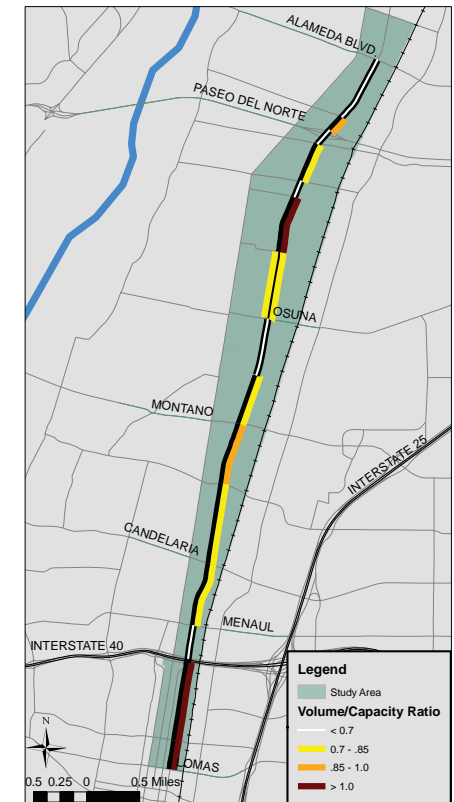
PM Speed Differential



AM Volume/Capacity Ratio



PM Volume/Capacity Ratio



Travel Time & Delay

PM Peak Travel Time (seconds)	Lomas	I-40 South Frontage	I-40 North Frontage	Menaul	Griegos	Montaño	Osuna	Los Ranchos Rd.	El Pueblo	Paseo del Norte	Ortega	Alameda
Lomas	X	111	117	154	291	365	478	579	648	656	680	759
I-40 South Frontage	122	X	6	43	180	254	367	468	537	545	568	647
I-40 North Frontage	127	6	X	37	174	248	361	462	531	539	562	641
Menaul	162	40	35	X	137	211	324	425	494	502	525	604
Griegos	290	168	162	128	X	74	187	288	357	365	388	467
Montaño	341	219	214	179	51	X	113	214	283	291	314	393
Osuna	464	343	337	302	175	123	X	101	170	178	201	280
Los Ranchos Rd.	565	443	438	403	276	224	101	X	69	77	100	179
El Pueblo	619	497	491	457	329	278	154	53	X	8	32	111
Paseo del Norte	626	504	499	464	337	285	162	61	8	X	23	102
Ortega	656	535	529	494	367	315	192	91	38	30	X	79
Alameda	708	586	581	546	419	367	244	143	89	82	52	X

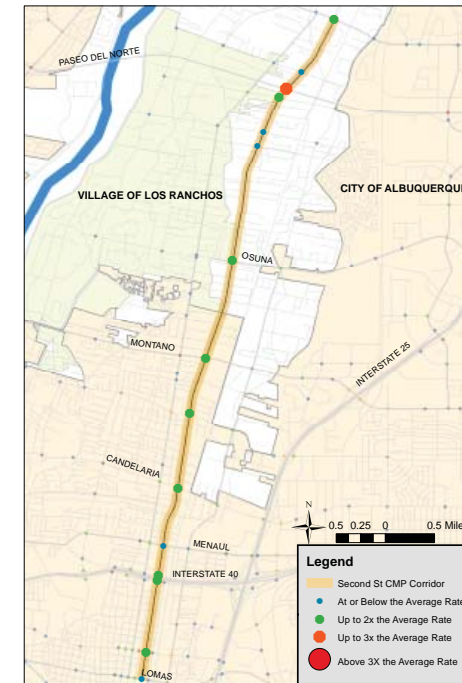
Distance (miles)	Lomas	I-40 South Frontage	I-40 North Frontage	Menaul	Griegos	Montaño	Osuna	Los Ranchos Rd.	El Pueblo	Paseo del Norte	Ortega	Alameda
Lomas	X	1.0	1.1	1.4	2.8	3.3	4.4	5.6	6.1	6.2	6.4	7.1
I-40 South Frontage	1.0	X	0.1	0.4	1.7	2.3	3.4	4.5	5.1	5.2	5.4	6.1
I-40 North Frontage	1.1	0.1	X	0.3	1.7	2.3	3.3	4.5	5.0	5.1	5.4	6.0
Menaul	1.4	0.4	0.3	X	1.4	2.0	3.0	4.2	4.7	4.8	5.1	5.7
Griegos	2.8	1.7	1.7	1.4	X	0.6	1.6	2.8	3.4	3.4	3.7	4.3
Montaño	3.3	2.3	2.3	2.0	0.6	X	1.0	2.2	2.8	2.8	3.1	3.7
Osuna	4.4	3.4	3.3	3.0	1.6	1.0	X	1.2	1.7	1.8	2.1	2.7
Los Ranchos Rd.	5.6	4.5	4.5	4.2	2.8	2.2	1.2	X	0.5	0.6	0.9	1.5
El Pueblo	6.1	5.1	5.0	4.7	3.4	2.8	1.7	0.5	X	0.1	0.3	1.0
Paseo del Norte	6.2	5.2	5.1	4.8	3.4	2.8	1.8	0.6	0.1	X	0.3	0.9
Ortega	6.4	5.4	5.4	5.1	3.7	3.1	2.1	0.9	0.3	0.3	X	0.6
Alameda	7.1	6.1	6.0	5.7	4.3	3.7	2.7	1.5	1.0	0.9	0.6	X

PM Peak Delay (seconds)	Lomas	I-40 South Frontage	I-40 North Frontage	Menaul	Griegos	Montaño	Osuna	Los Ranchos Rd.	El Pueblo	Paseo del Norte	Ortega	Alameda
Lomas	x	7	8	13	18	39	70	76	101	104	105	133
I-40 South Frontage	18	x	1	6	11	32	63	69	94	97	98	126
I-40 North Frontage	18	0	x	5	11	32	62	68	93	96	97	125
Menaul	21	3	3	x	5	26	57	63	87	90	92	120
Griegos	17	-1	-1	-4	x	21	52	57	82	85	86	115
Montaño	15	-3	-3	-6	-2	x	31	36	61	64	65	94
Osuna	56	38	38	35	40	41	x	6	30	33	35	63
Los Ranchos Rd.	62	44	44	41	45	47	6	x	25	28	29	57
El Pueblo	71	53	53	50	55	56	15	9	x	3	4	33
Paseo del Norte	73	56	55	53	57	58	17	12	2	x	1	30
Ortega	82	64	64	61	65	67	25	20	10	8	x	28
Alameda	83	65	65	62	66	68	26	21	11	9	1	x

PM Peak Delay (seconds/mile)	Lomas	I-40 South Frontage	I-40 North Frontage	Menaul	Griegos	Montaño	Osuna	Los Ranchos Rd.	El Pueblo	Paseo del Norte	Ortega	Alameda
Lomas	x	6.9	7.3	9.5	6.7	11.8	16.1	13.6	16.5	16.8	16.2	18.8
I-40 South Frontage	17.6	x	15.8	17.0	6.6	13.9	18.8	15.1	18.4	18.7	18.0	20.8
I-40 North Frontage	16.9	4.5	x	17.2	6.3	13.9	18.9	15.1	18.4	18.7	18.0	20.8
Menaul	15.2	8.6	9.3	x	3.8	13.3	19.0	14.9	18.5	18.8	18.0	21.0
Griegos	6.0	-0.7	-0.9	-3.1	x	35.6	32.0	20.4	24.5	24.9	23.3	26.5
Montaño	4.5	-1.2	-1.3	-3.0	-2.6	x	30.0	16.4	22.1	22.6	21.0	25.0
Osuna	12.9	11.4	11.5	11.8	24.5	40.0	x	4.6	17.5	18.5	16.6	23.2
Los Ranchos Rd.	11.1	9.7	9.7	9.8	16.1	21.1	4.7	x	45.3	45.2	32.6	37.7
El Pueblo	11.7	10.5	10.6	10.6	16.3	20.3	8.7	17.3	x	44.6	12.3	33.3
Paseo del Norte	11.9	10.8	10.8	10.9	16.6	20.6	9.5	18.9	31.8	x	4.3	32.5
Ortega	12.7	11.7	11.8	12.0	17.6	21.4	12.2	22.3	30.3	29.9	x	44.7
Alameda	11.7	10.7	10.7	10.8	15.3	18.1	9.8	13.7	11.7	10.2	1.7	x

Safety

Intersections with Reported Crashes 2005-2009



All Crashes along the Corridor

Crash Type	2005	2006	2007	2008	2009
Fatal accident	0	1	1	2	0
Non-fatal accident injury	81	83	73	58	82
Property damage only	207	243	196	180	156
All Crashes	288	327	270	240	238

Top Contributing Factors in Crashes 2nd St

1. Driver inattention 27 %
2. Following too close 17 %
3. Failure to yield 13 %
4. Red light running 8 %
5. Improper turn 6 %