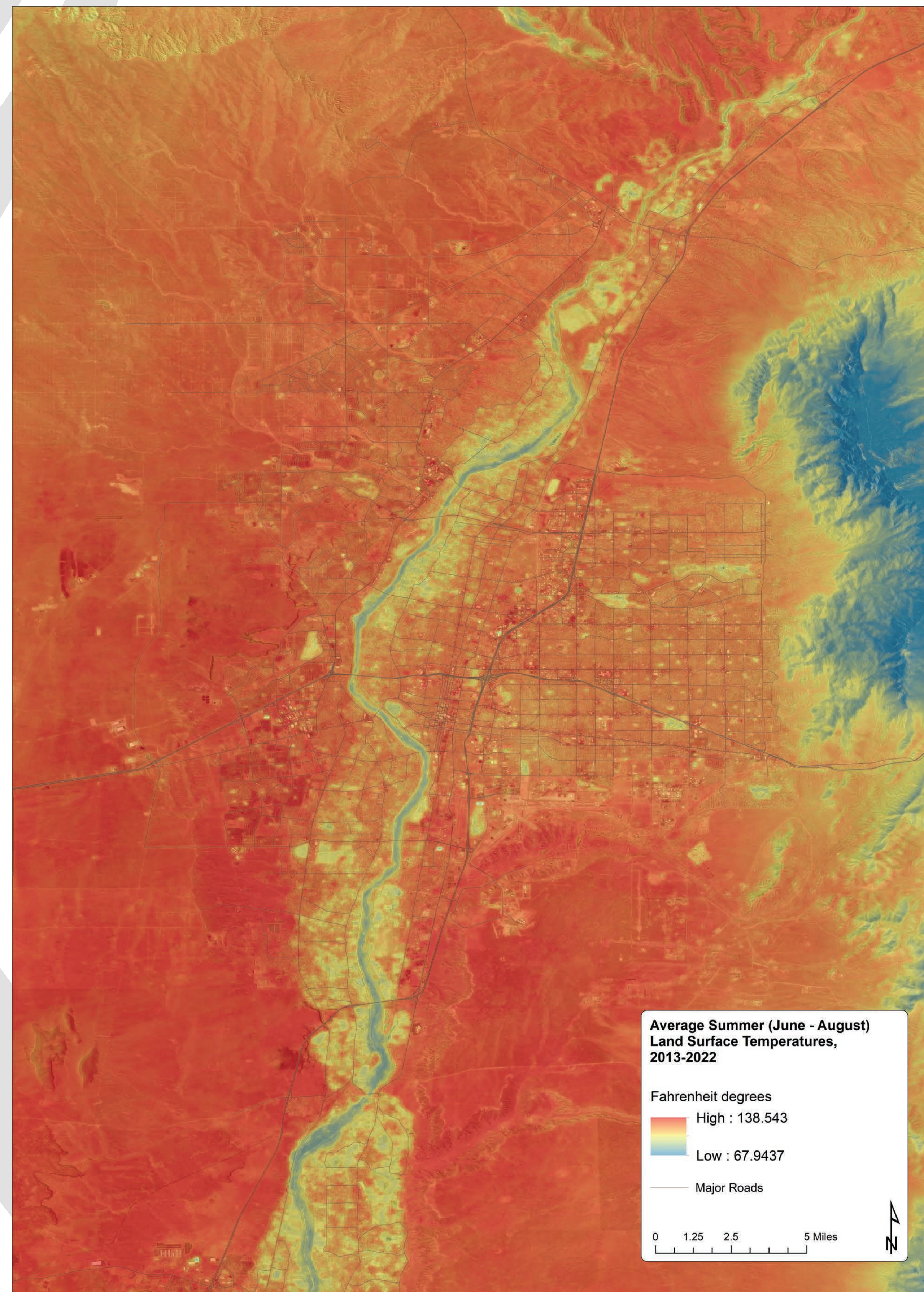


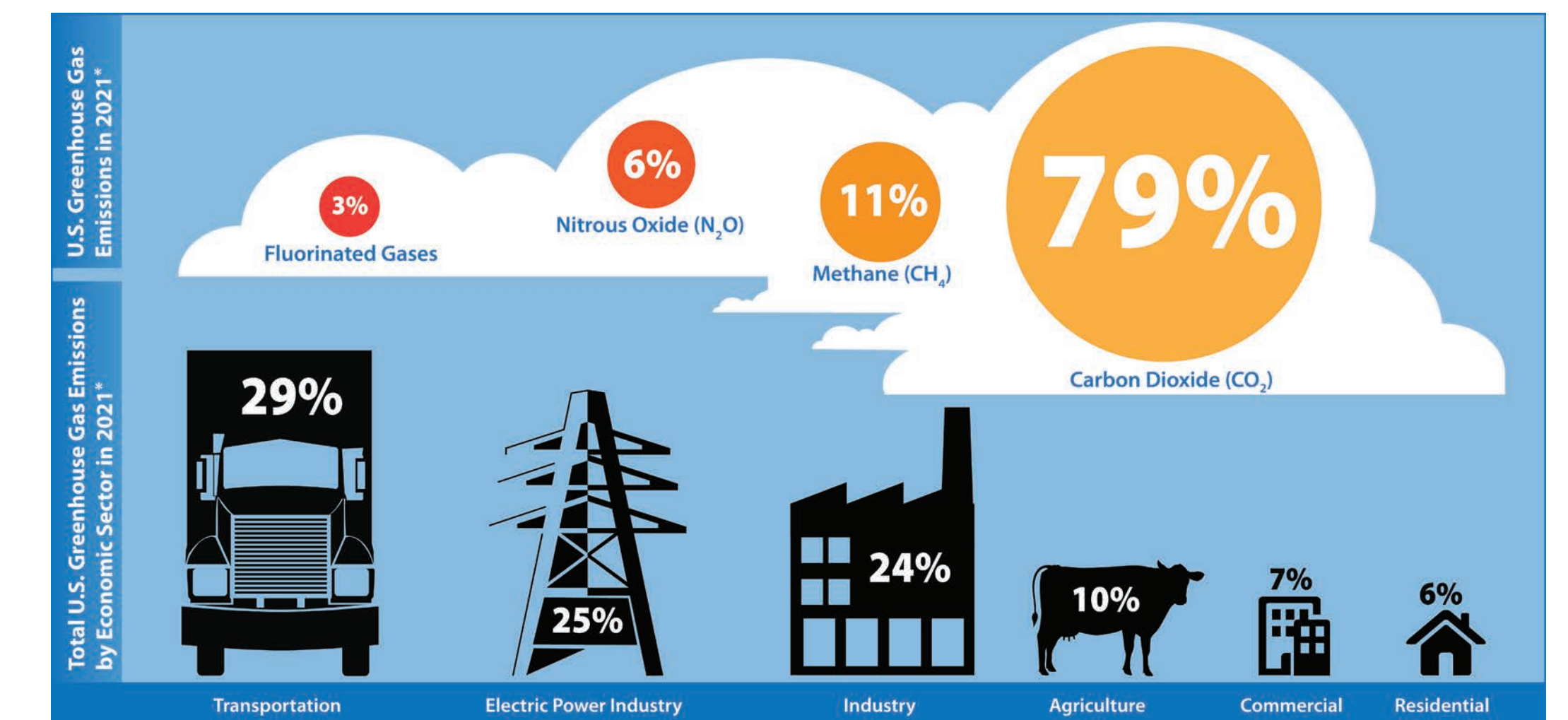
A Healthy Environment

The Mid-Region Metropolitan Planning Organization (MRMPO) seeks to support a healthier environment by working to reduce transportation-related impacts to air pollution and climate change while at the same time protecting lives and property from the impacts of a changing climate already being felt.

ALBUQUERQUE URBAN HEAT ISLANDS



Source: MRCOG

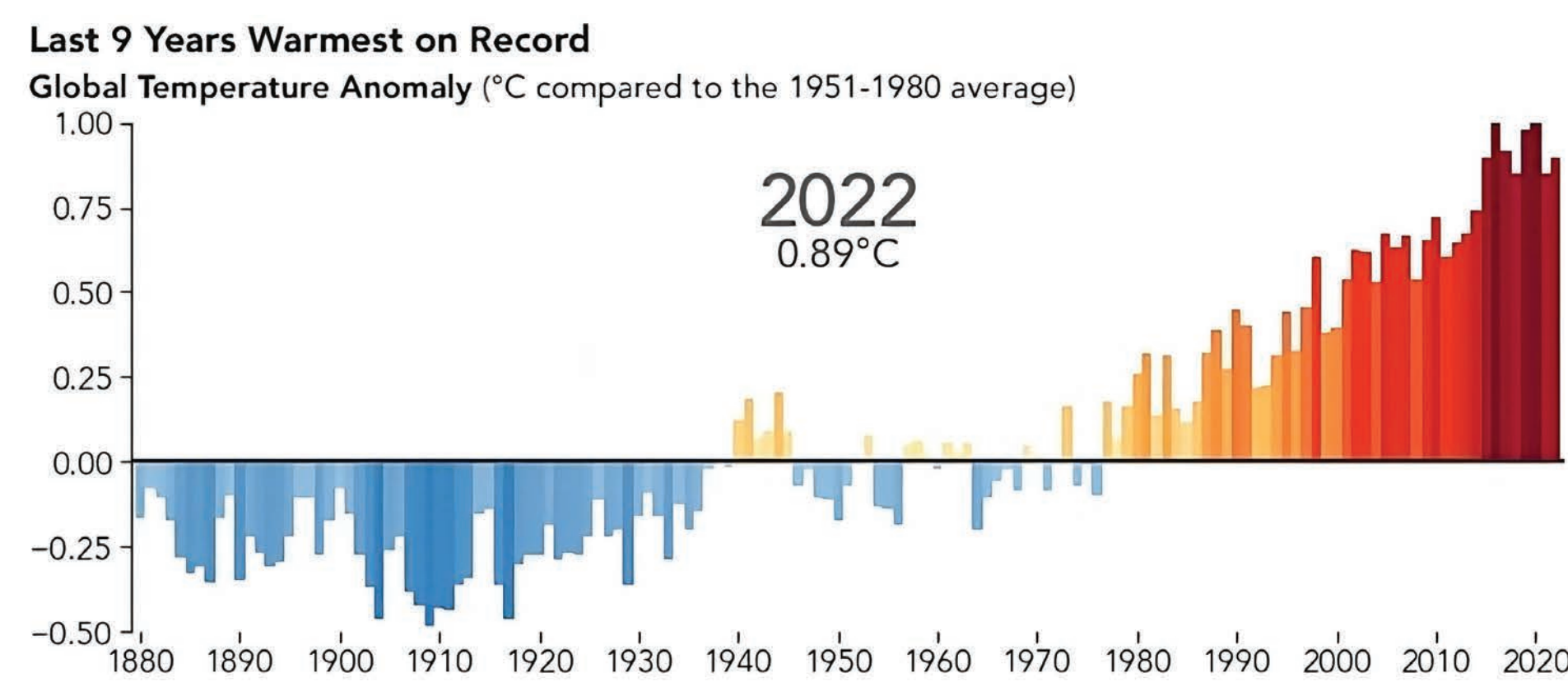


Source: Environmental Protection Agency. (2023, August). 2021_EconomicSector_Type.jpg. Greenhouse Gas Inventory Data Explorer. <https://cfpub.epa.gov/ghgdata/inventoryexplorer/>

CO₂ is by far the greatest source of greenhouse gas emissions contributing to climate change, and the transportation sector is currently responsible for the majority of CO₂ emissions in the U.S.



This map visualizes land surface temperature data collected by satellite during the hottest summer months from June 1st to September 1st from 2013 to 2022. Residents of areas shown in red are more exposed to the dangerous impacts of extreme heat. These impacts can be reduced through inclusion of more street trees, vegetation, and shade structures.



Source: "NASA Announces Summer 2023 Hottest on Record." Sept. 14, 2023. <https://www.nasa.gov/news-release/nasa-announces-summer-2023-hottest-on-record/>

The Summer of 2023 was Earth's hottest since global records began in 1880, according to NASA scientists. This chart shows the difference in average temperatures from the 1880-1950 base period during the meteorological summer (June - August). Extreme heat is the leading cause of weather-related death in the U.S., according to the U.S. Centers for Disease Control and Prevention, causing or contributing to the deaths of more than 700 Americans per year over the past 30 years.

MRMPO develops strategies to mitigate and reduce harm to the environment in collaboration with the public. Examples are:

- Developing infrastructure that supports the alternative fuel technologies of the future and reduces the need for driving by making walking, biking, and transit more viable, attractive options
- Developing safe and connected bike trail and sidewalk networks that include shade trees and vegetation that cools and cleans the air and water
- Coordinating transportation with land use development to avoid environmentally sensitive areas while providing access to transit, jobs, services, and outdoor recreation opportunities